

MT. TREMPER GROUND COVER 9/16/07 (13429)

Compare with pr. 134-1 through 134-9 | 21.9 miles from 2810

Time table

	UP	DOWN	
(AA)	9:15 AM	2:31	Trail head
(S)		2:26	
(A)		2:22	Register
(B)		2:15	
(C)	9:50		
(D)	10:00		
(E)		2:03	Quarry
(F)			
(G)		1:53 ±	
(H)			
(I)	10:26		
(J)	10:30		
(K)		1:36	
(L)		down	
(M)	10:42		Lean to
(N)	10:45		Spring
(O)	10:50	1:25	
(P)			on crest
(PP)	11:14		
(Q)	11:15 to ca. 12:15	12:56	Tower
(R)	12:32	12:42	North Summit

(AA) to (A) on new trail: Several stumps persist from pre-1969 SNT acquisition. When was land acquired?

(AA) to (B) or (C) HEMLOCK with small # of woolly adelgid. Many trees with sparse foliage, a few dead. Part (C), hemlocks are healthy & without adelgid. Ewh Pine

(AA) to (E) No one dominant tree. Diverse throughout with many species. Ground cover not sparse now except under HEM, along the many rills, & in areas heavily sheered.

(E) to (F) Oak becomes the dominant with ASH & BB common. Understory is B, SUB & HEM. In places where there is adequate light, ground cover is abundant dominated by composites & ferns:

SCAES	TIAR	RODOR	PA
SLAT	IMP PAL	PARTH	DMARG
A DIV	LAP	RF	
EUP		RA	
A CORD		<u>GAUTHIERIA</u>	
S BICOLOR		<u>AN</u> , the only boreal	
A PREN			

Partially defoliated & some dead SUB

Also: DST, MO, EWH PINE, KLAT, PB
OAK & ASH dominant with some older SUB. Oldest graffiti on (over)

finely-banded Gneiss? boulder on trail at quarry

a 12" Beech is 1987.

(J) Hemlock healthy & dense understory with bare litter beneath. Ledge has EUP dominant, Amacro, Strept, Pilea, PREN. SAMB common, 2 or 3 year old and at least 6' tall, initiated soon after 2005 defoliation.

(L) BASK EUP + ADIV dominant. Nil tree reprod locally, unlike (M). BIDENTS with trifoliolate IVF common. (M) Scattered MO + OST young, + young scattered B, SUB, NEM. ACOR + AMACRO, KLAT. Under denser SUB + B, EUP + ASTER become rare to absent, locally.

(WN) The least disturbed portion of forest with a few boreals (except for (R)): AN, OX few RLAC, POLYPODIUM, AA, MITCH, ONIO, SMIACTNA. All under YB, RM + light NEM REPRO. DP, SINT, MC, PCILI. Possibly not burned or seldom burned.

Several Norway spruce saplings, possibly from 1901 plantation from which some spruce survived? 8 yrs old.

↖ #6 1 OAK cut ca- 20y ago at 8' up and 12" dbh = 100y.

(O) On crest. Heavy SUB and OAK defoliation with RA-RS-MO-PCILI

to (P) thickets beneath. VACC-heath + 'phoneline no longer visible.

Photos BC-B-HAMAM-ASH-CNC scattered

Beech thickets, locally keep at the RA-RS-PCILI-MO. Some OAK + SUB dead.

13430

(Q) Summit. Photos from tower OAK dom with a few BC + RM. RA thickets. Some YB, B, MO, PCILI, VACC SNG, AMACRO, AA, AN, SRUG. Many oaks have dead branches, some with dead tops, others all dead.

(R) North summit: ledge 10' high on West. Less defoliation. Veg max normal. NEM healthy. SINT, AA, PCILI under control, YB, RM, B; OAK overstory but not reproducing, MO, RA.

(E) to (R) Midway between tower + N summit there is a B-dom area on a narrow crest: SORSZ seedlings, Lyco OBS, RS, DP, ILEX MONT, MITCH. No evidence of ice damage from 4/15/07 storm.

Broken RM limb grew 6y/inch. A few SUB to max 6" dbh

● 1:46 PM OAK broken 70 to 75 y at 16" diam.

#7

MT-TREMPER TRAIL PLAN

from 1969, 1977

(13431)

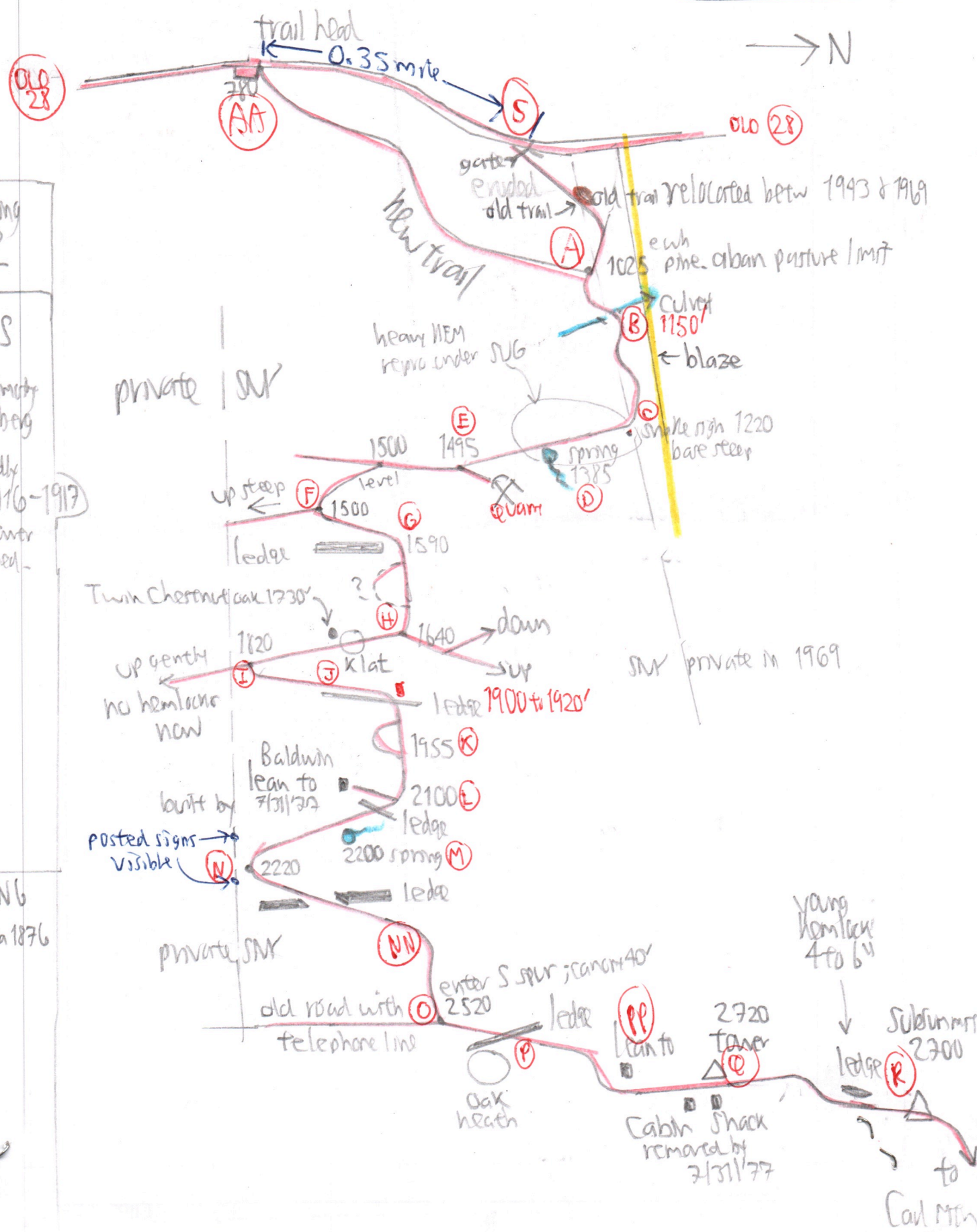
Site letters (A) to (R) are from

from (PP134-1 to 9)

Last banking 1862

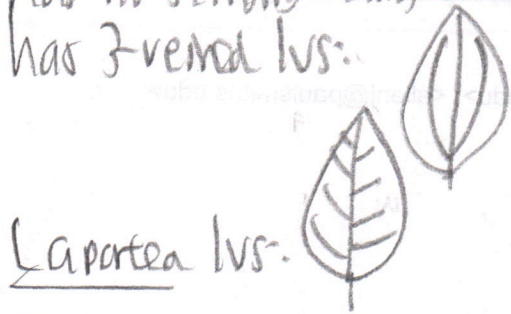
BURNS
1881 } Timothy
1888 } Berg
repeatedly until 1916-1917 when tower opened.

LOGGING
Oak bark ca 1876



→ N

Pilea is shorter than Laportea,
has no stinging hairs, and
has 3-veined lvs:



Laportea lvs.

(C) The snake warning sign is down
although the ASH is still there.

PHOTOS

From Tower (cabin closed; stairs open):

- end
old
roll
- ① Wittenberg Slide
 - ② Plateau
 - ③ Shokan High Pt. to Hudson Highland

Begin new roll from tower:

- ④ Several of Cooper Lake to Indian Head
- ⑤ Oak tops below tower + Tobias
- ⑥ Wittenberg again - un-Catskills-
like; it's so steep.
- ⑦ Overlook to Plateau
- ⑧ Hunter + Black Head

On descent:

- ⑨ (P) Peili under more than 6 dead SUB
creating a canopy gap 1:07
- ⑩ (P) Peili climbing dead saplings +
RS 1:15. Many dead trees

below (N) = EUP, ASTER + SOLID CAES profuse,
1:25

- ⑪
- ⑫ (G) = ditto 1:53

NOISE:

Human noise

134-32

from Phoenixia is constant + annoying
even up to the tower = traffic, aircraft,
motorcycles, fire siren, rifle practice.
The EMER whistle can easily be
heard + is a delight.